

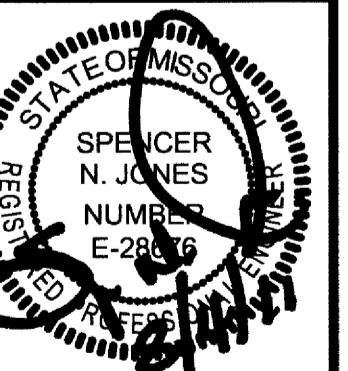
205 Park Central East
Suite 400
Springfield, MO 65806
(417) 873-2255
www.gra.com



ARCHITECT

CHILES RESIDENCE
WEST FARM ROAD 124
BOIS D'ARC, MO 65612

Copyright © 2011 by
Great River Associates, Inc.



Spencer N. Jones, Engineer
MO# E-28310

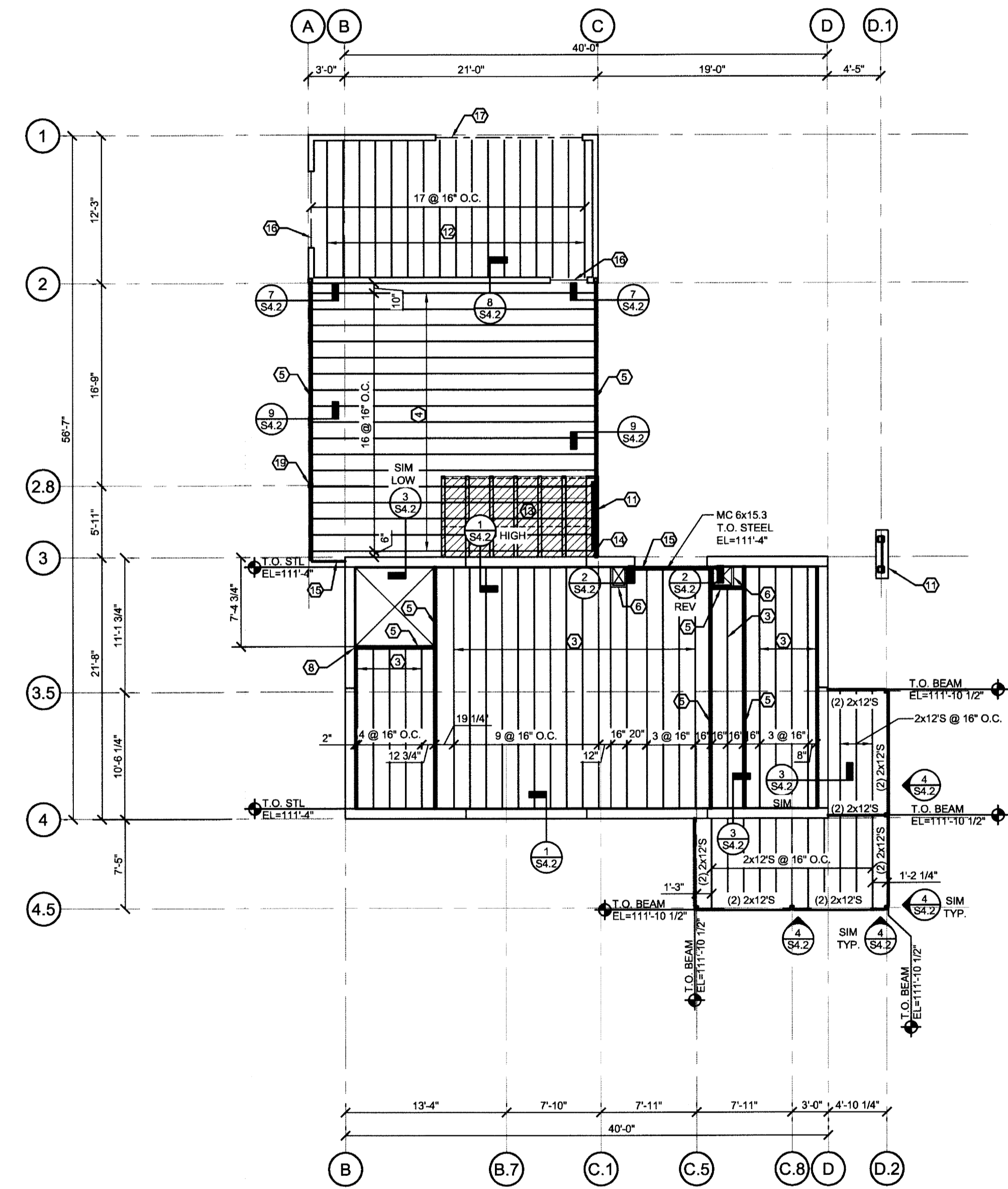
CHECKED BY: JCO
DRAWN BY: JS
JOB NUMBER: 10-2860
SCALE: SEE SHEET
ISSUE DATE: 08.04.2011

SHEET TITLE:
SECOND FLOOR
FRAMING PLAN

S3.2

GENERAL FRAMING KEYNOTES

- 1 PROVIDE L3x3x3/16 H-FRAME AROUND ROOF DRAIN. COORDINATE SIZE AND LOCATION. WELD TO SUPPORTING MEMBERS WITH 3" OF 3/16" FILLET WELD EACH END.
- 2 HORIZONTAL BRIDGING SHOWN FOR REFERENCE ONLY. JOIST MFR. SHALL LOCATE ALL REQUIRED BRIDGING.
- 3 PRE-ENGINEERED WOOD TRUSS PROFILE "A" @ SPACING SHOWN. REFER TO DETAIL 2/S3.1.
- 4 PRE-ENGINEERED WOOD TRUSS PROFILE "B" @ SPACING SHOWN. REFER TO DETAIL 2/S3.1.
- 5 PRE-ENGINEERED GIRDER TRUSS. TOP AND BOTTOM CHORD DIMENSION TO MATCH ADJOINING TRUSSES.
- 6 2x4 BLOCKING @ FLOOR OPENING.
- 7 HSS 4x4x3/8 STUB COLUMN W/ 3/4" THICK TYPE B BASEPLATE, L=9", W=10", SEE 2/S4.1.
- 8 PRECAST MANUF. TO PROVIDE EMBED PLATE TO SUPPORT GIRDER TRUSS CONNECTION SIMILAR TO 1/S4.2. UNFACTORED DESIGN REACTION: 1.0 KIPS DL, 0.95 KIPS LL.
- 9 4x12 HEAVY TIMBER BEAMS @ SPACING INDICATED.
- 10 PRECAST MANUF. TO PROVIDE EMBED PLATE FOR HIGH & LOW HSS ATTACHMENT. UNFACTORED DESIGN REACTION: P: 0.8 KIPS DL, 0.8 KIPS LL, 0.0 KIPS WL. N: 0.0 KIPS DL, 0.0 KIPS LL, ± 3.4 KIPS WL.
- 11 WOOD STUD FRAMED WALL, REFER TO ARCH.
- 12 PRE-ENGINEERED WOOD TRUSS PROFILE "C" @ SPACING SHOWN. REFER TO DETAIL 2/S3.1.
- 13 HATCHED AREA REPRESENTS WOOD FRAMED DECK & STAIR ON PONY WALL STRUCTURE. FRAME PONY WALLS PERPENDICULAR TO ROOF TRUSSES. SEE ARCH. FOR ADDITIONAL INFO.
- 14 PRE-ENGINEERED GIRDER TRUSS TO ATTACH TO PRE-CAST WALL SIMILAR TO 7/S4.2. PRE-CAST MANUF. TO PROVIDE EMBED PLATES FOR SEAT AND STABILIZER PLATE ATTACHMENTS UNFACTORED BOTTOM CHORD DESIGN REACTION: P: 4.8 KIPS DL, 5.5 KIPS LL, -1.7 KIPS WL (NET).
- 15 STICK FRAME SPANDRAL WALL BETWEEN SUPPORTS. ATTACH FRAMING AT EACH END W/ SIMON LU HANGERS & 1" TEK SCREWS AS REQUIRED.
- 16 (3) 2x10 HEADER BEAM W/ (2) 1/2" PLYWOOD SPACERS AT OPENING. PROVIDE CRIPPLE STUD @ EACH END.
- 17 (3) 1-3/4"x1-1/4" MICROLAM LVL HEADER BEAM AT OPENING. PROVIDE DOUBLE TRIMMER STUD AT EACH END FOR FULL BEARING.
- 18 HATCHED AREA REPRESENTS 3/4" PLYWOOD ROOF SHEATHING. REFER TO GENERAL NOTES FOR ADDITIONAL INFO.
- 19 PROVIDE SIMPSON CCOQ3-SDS2.5 OR EQUIVALENT COLUMN CAP FOR GIRDER TRUSS BEARING. WELD COLUMN CAP TO COLUMN ALL AROUND.



1 CARPORT ROOF & SECOND FLOOR FRAMING PLAN
SCALE: 1/8"=1'-0"

